

**PHILIPS**

AMF220



# User manual

This product is only suitable for well insulated spaces or occasional use.



# Contents

<b>1</b>	<b>Your 3-in-1: air purifier, fan and heater</b> .....	<b>2</b>
	Product overview .....	2
	Display overview .....	3
	Controls overview .....	4
<b>2</b>	<b>Getting started</b> .....	<b>5</b>
	Installing the filter .....	5
	Setting up the remote control .....	5
<b>3</b>	<b>Using the 3-in-1: air purifier, fan and heater</b> .....	<b>5</b>
	Air quality light .....	5
	Turning on and off .....	6
	Heater and fan .....	6
	Oscillation .....	6
	Setting the timer .....	6
	Setting the child lock .....	6
	Sleep, turning light on/off .....	7
	Pairing your remote control .....	7
	Replacing the battery .....	7
<b>4</b>	<b>Cleaning and maintenance</b> .....	<b>8</b>
	Cleaning the body of the appliance .....	8
	Cleaning the filter surface .....	8
	Filter replacement .....	8
<b>5</b>	<b>Troubleshooting</b> .....	<b>9</b>

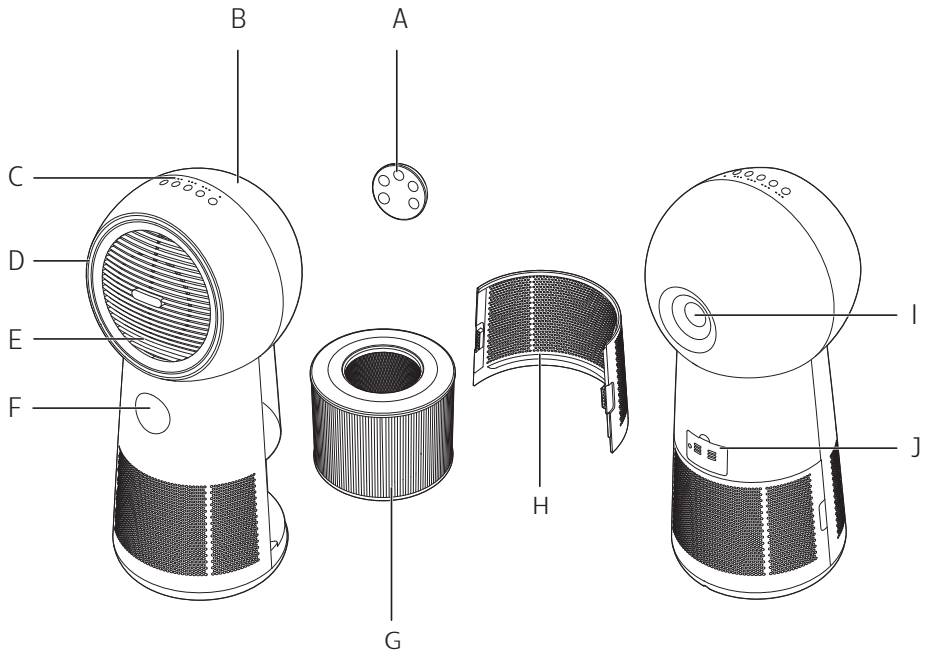
# 1 Your 3-in-1: air purifier, fan and heater

Congratulations on your purchase, and welcome to Philips!

To fully benefit from the support that Philips offers, register your product at [www.philips.com/welcome](http://www.philips.com/welcome).

---

## Product overview



**A** Remote control

**B** Housing

**C** Control buttons

**D** Light strip

**E** Air outlet

**F** Display screen

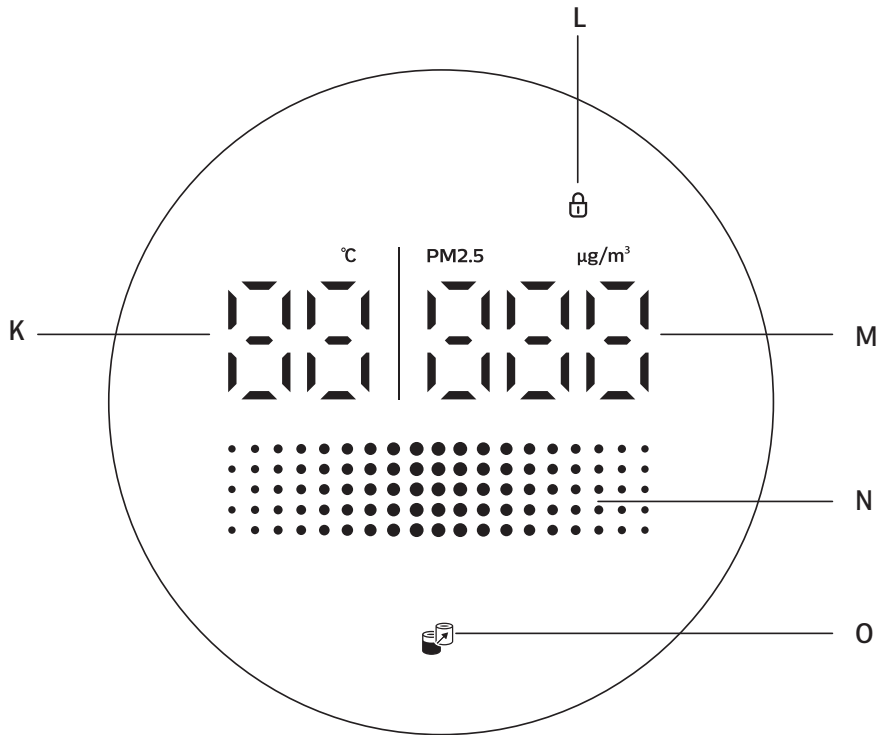
**G** Philips filter (FYM220/30)

**H** Back cover

**I** Storage slot for remote control

**J** Air quality sensor

## Display overview



**K** Temperature display

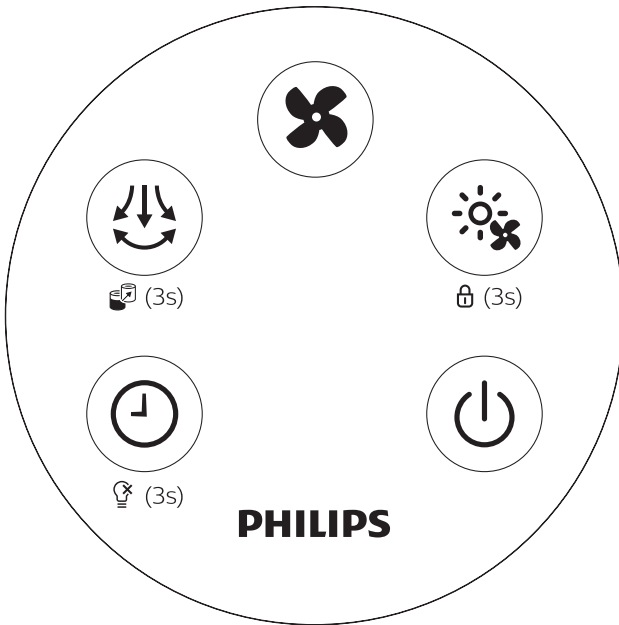
**N** Air quality indicator






**L** Child lock indicator

**O** Filter replacement alert

**M** PM2.5 display

# Controls overview

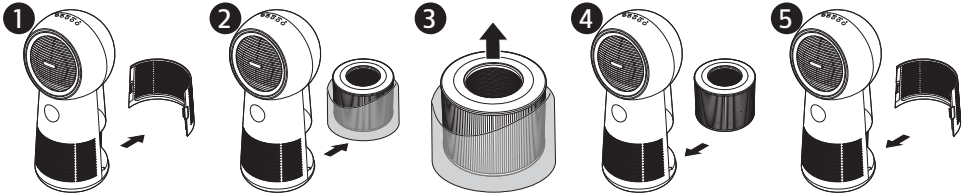


					
Short press	Timer	Oscillation	Fan setting	Heater setting	On/off
Press for 3 seconds	Sleep Light on/off	Reset filter lifetime		Child lock	

## 2 Getting started

### Installing the filter

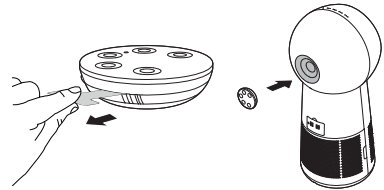
**Note:** Make sure the appliance is unplugged from the electrical outlet before installing the filter.



- 1 To remove the back cover, hold the side of it with both hands and pull.
- 2 Pull the filter from the appliance.
- 3 Remove all packaging materials from the filter.
- 4 Put the filter back into the appliance.
- 5 Reattach the back cover.

### Setting up the remote control

- 1 Pull out the plastic film on the remote control to activate the battery.
- 2 Pair the remote control with the appliance if you have multiple devices in one house (see the chapter “Pairing your remote control”).



**Note:** Place the remote control in the slot and it snaps in place automatically.

## 3 Using the 3-in-1: air purifier, fan and heater



### Air quality light

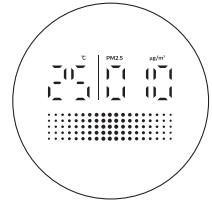
PM2.5 level	Air quality light color	Air quality level
≤ 60	Blue	Good
61-120	Blue-purple	Fair
121-250	Purple-red	Poor
> 250	Red	Very poor

## Turning on and off



### Note:

- Plug the appliance into the power outlet; do not use a power strip.
- If the appliance is running in heating mode when you turn it off, it continues working for 20 seconds to exhaust the remaining heat. Counting down will show on the display panel.

- 1 Press  to switch on the appliance.
- 2 The display panel lights up, and appliance shows the PM2.5 level and temperature.
- 3 Press  to switch off the appliance.




## Heater and fan

				Light strip
Heater (  )	Low	Medium	High	Red
Fan (  )	Low	Medium	High	Blue

## Oscillation

Press the  button, the appliance can oscillate at three angles: 60°, 120° and 350°.





## Setting the timer

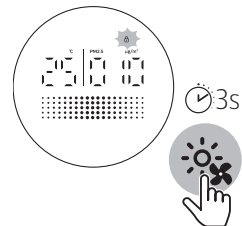
Press the  button repeatedly to set operating hours of the appliance. The timer is available from 1 to 7 hours.

1 hour			2 hours			3 hours			4 hours			5 hours			6 hours			7 hours			
<b>1h</b>	<b>2h</b>	<b>4h</b>	<b>1h</b>	<b>2h</b>	<b>4h</b>	<b>1h</b>	<b>2h</b>	<b>4h</b>	<b>1h</b>	<b>2h</b>	<b>4h</b>	<b>1h</b>	<b>2h</b>	<b>4h</b>	<b>1h</b>	<b>2h</b>	<b>4h</b>	<b>1h</b>	<b>2h</b>	<b>4h</b>	
●	○	○	○	●	○	●	●	○	○	○	●	●	○	●	○	○	●	●	○	○	○

To deactivate the timer, press the  button repeatedly until all the hour indicators are off.

## Setting the child lock

- 1 Press and hold the  button for 3 seconds to activate the child lock.
  - ↳  appears on the screen.
  - ↳ All the other buttons are unresponsive except on/off.
- 2 Press and hold the  button for 3 seconds to deactivate child lock.
  - ↳  disappears.

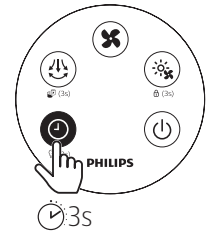




---

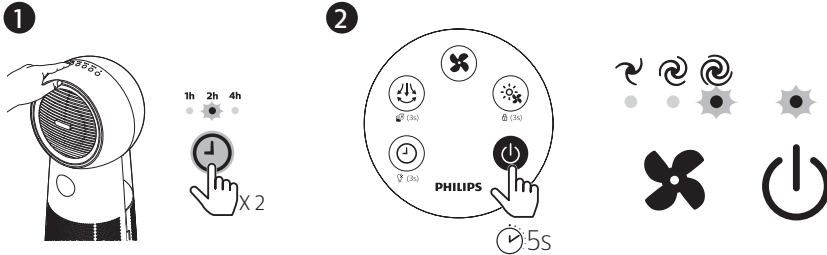
## Sleep, turning light on/off

- 1 Press and hold the ⏻ button for 3 seconds.  
↳ The display screen dims, rest lights will turn off.
- 2 Press any button to turn all lights on.



---

## Pairing your remote control

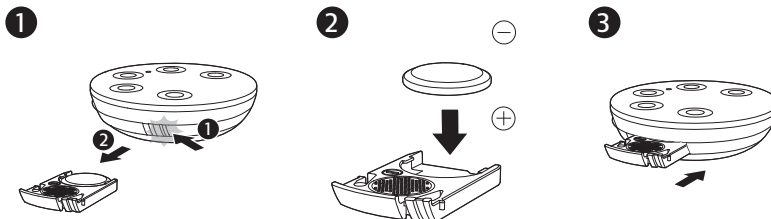


- 1 Unplug the appliance from the power outlet and wait for 10 seconds. Plug in the appliance, then within 5 seconds, press the ⏻ button on the appliance twice.  
↳ The 2h indicator lights up.
- 2 Long press the ⏻ button for 5 seconds on the remote control within 5 seconds.  
↳ The ⏻ and ⏻ indicator of fan button on the appliance lights up, and the appliance operates in the fan mode, indicating that the pairing is successful.

**Note:** If the "2h" indicator is blinking, you must repeat the pairing.

---

## Replacing the battery



- 1 Push the battery bracket edge gently and pull it out of the remote control.
- 2 Insert the new CR2032 battery with correct polarities as indicated.
- 3 Put the battery bracket back into the remote control.

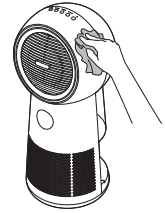
# 4 Cleaning and maintenance

**Note:** Switch off the appliance and unplug it from the power outlet before continuing.

## Cleaning the body of the appliance

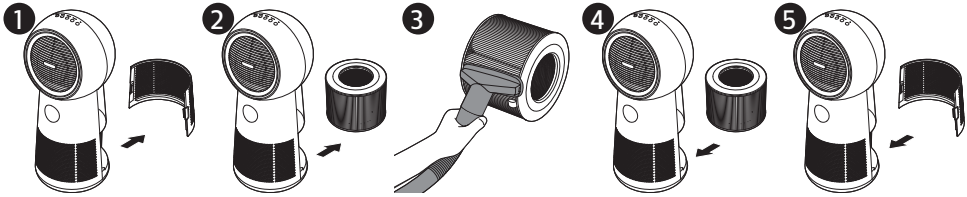
Use a soft, dry cloth to clean the appliance surface, including air inlet and outlet.

Clean particle sensor surface. Do not open particle sensor cover.



## Cleaning the filter surface

Clean the filter surface with a vacuum cleaner or brush every two weeks.



- 1 Pull the back cover and remove it from the appliance.
- 2 Pull the filter from the appliance.
- 3 Clean the surface of the filter with a vacuum cleaner.
- 4 Put the filter back into the appliance.
- 5 Reattach the back cover.
- 6 Wash your hands thoroughly after cleaning the filter.




## Filter replacement

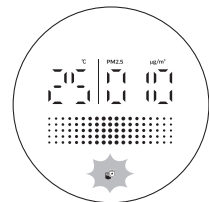
### When the filter replacement alert lights up


**Note:**

- The filter is not washable or reusable.
- Do not smell the filter because it contains air pollutants.

Replace the filter when  lights up on the screen.

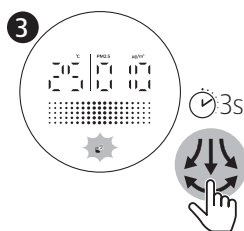
- 1 Replace the filter with Philips filter (FYM220/30). Follow the instructions in the chapter “Installing the filter”.
- 2 Press  to switch on the appliance.



- 3 Press and hold the  button for 3 seconds to reset the filter replacement time.


↳ The filter replacement alert  disappears from the screen.

- 4 Wash your hands thoroughly after replacing the filter.




---


## Before the filter replacement alert lights up

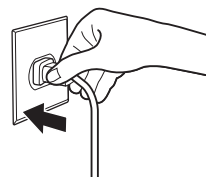
You can replace the filter before the filter replacement alert () lights up. If you do this, you need to reset the filter lifetime counter manually.

- 1 Unplug the appliance from the power outlet and wait 10 seconds.

- 2 Plug the appliance into the power outlet.

- 3 Within 15 seconds after power on, press and hold the  button for 3 seconds to reset the filter lifetime counter.

↳ The filter replacement alert  blinks once after successfully resetting the filter.




## 5 Troubleshooting

This chapter summarizes the most common problems you could encounter with the appliance. If you are unable to solve the problem with the information below, contact the Consumer Care Center in your country.

---

Problem	Possible solution
The airflow from the air outlet is significantly weaker than before.	<ul style="list-style-type: none"><li>• The surface of the filter is dirty. Clean the surface of the filter (see the chapter “Cleaning and maintenance”).</li></ul>

---

Problem	Possible solution
<p>The air quality does not improve even though the appliance has been operating for a long time.</p>	<ul style="list-style-type: none"> <li>• Check whether the packing material is removed from the filter.</li> <li>• Check whether the filter is installed in the appliance.</li> <li>• Clean the sensor cover surface with mop or vacuum cleanser; Do not open sensor cover or touch inside.</li> <li>• Room size is too large, or the outdoor air quality is poor. For optimum purification performance, close the doors and windows when operating the appliance.</li> <li>• There are indoor pollution sources. Examples include cigarette smoke, cooking fumes, incense, perfume and alcohol.</li> <li>• Filter has reached end of life. Replace the filter with a new one.</li> </ul>
<p>The appliance produces a strange smell.</p>	<ul style="list-style-type: none"> <li>• The first few times you use the appliance, it may produce a plastic smell. This is normal.</li> <li>• If the appliance produces a burning smell, immediately unplug it and turn it upside down to check whether any foreign objects have fallen into the appliance. If nothing is found, please contact your Philips dealer or an authorized Philips service center.</li> <li>• The filter may produce an odor after being used for a while because of the absorption of indoor gases. It's recommended that you reactivate the filter by putting it in direct sunlight for repeated use. If the odor remains, replace the filter.</li> </ul>
<p>The appliance is too loud.</p>	<ul style="list-style-type: none"> <li>• The noise level is higher if you select high speed.</li> <li>• If anything drops into air outlet, it may also cause abnormal loud sound. Immediate turn off the appliance and turn it upside down to remove foreign objects.</li> <li>• If there is an abnormal sound, contact the Consumer Care Center in your country.</li> </ul>
<p>The appliance still indicates that I need to replace a filter, but I already did.</p>	<ul style="list-style-type: none"> <li>• Perhaps you did not reset the filter lifetime counter. Switch on the appliance. Then press and hold the  button for 3 seconds.</li> </ul>
<p>The heating function is not working.</p>	<ul style="list-style-type: none"> <li>• Check whether the air inlet or air outlet is blocked.</li> <li>• Check whether the filter surface is excessively dirty and blocking airflow. If so, the heating function may stop working for protection.</li> </ul>

Information requirements for electric local space heaters

Model identifier(s): AMF220					
Item	Symbol	Value	Unit	Item	Unit
<b>Heat output</b>				<b>Type of heat input, for electric storage local space heaters only (select one)</b>	
Nominal heat output	$P_{nom}$	2,1	kW	manual heat charge control, with integrated thermostat	[no]
Minimum heat output (indicative)	$P_{min}$	1,2	kW	manual heat charge control with room and/or outdoor temperature feedback	[no]
Maximum continuous heat output	$P_{max,c}$	1,8	kW	electronic heat charge control with room and/or outdoor temperature feedback	[yes]
<b>Auxiliary electricity consumption</b>				fan assisted heat output	[no]
At nominal heat output	$e_{l,max}$	N/A	kW	<b>Type of heat output/room temperature control (select one)</b>	
At minimum heat output	$e_{l,min}$	N/A	kW	single stage heat output and no room temperature control	[no]
In standby mode	$e_{l,SB}$	0	kW	Two or more manual stages, no room temperature control	[no]
				with mechanic thermostat room temperature control	[no]
				with electronic room temperature control	[yes]
				electronic room temperature control plus day timer	[no]
				electronic room temperature control plus week timer	[no]
				<b>Other control options (multiple selections possible)</b>	
				room temperature control, with presence detection	[no]
				room temperature control, with open window detection	[no]
				with distance control option	[no]
				with adaptive start control	[no]
				with working time limitation	[yes]
				with black bulb sensor	[no]
Contact details	DAP B.V. Tussendiepen 4 a, 9206AD Drachten, The Netherlands				







© 2021 Philips Domestic Appliances Holding B.V.  
All rights reserved.

3000 066 33101

